

**FLOATING INSTALLATION INSTRUCTIONS – 12mm Long Plank (1845mm) only ANGLE / FOLD 5G CLICK PROFILE**

**12mm Short Plank (1380mm) only ANGLE / ANGLE 2G CLICK PROFILE**

Please follow or Aquastop click profile installation guidelines to ensure a quality install. Please read the entire document as a number of important considerations are noted for a floating installation. Professional contractors should be used. **Note;** do not remove the black plastic tongue in short end profile as this is an integral part of the 5g click locking mechanism. **Refer note; special installations. Note: Short Length Plank range is angle/angle 4 sides, for angle joint where image suggests fold, angle instead to connect.**

**Installation in Bathrooms & Wet Areas**

To maximise the moisture / water resistant performance of Aquastop laminate the following installation method must be followed in any area that could be subject to regular moisture, such as bathrooms or laundry areas. A mould resistant waterproof silicone sealant should be used to completely fill & seal the expansion gaps around the perimeter of the wet area floor. This will prevent water moving from the floor surface to the underside of the planks which may create mould & plank damage. The wet area floor should not be joined to a floor surface in an adjoining room. The wet area should be terminated with a transition trim and sealed appropriately. **These additional instructions only apply for wet area locations.**

All floating installations require an Acoustic Underlay & Moisture Barrier (MB) system. **Substrate flatness is critical; sub-floor should not exceed 3mm over a 3m radius in all directions. Any hollows or humps need to be assessed and rectified prior to installation.** Please follow manufacturer's guidelines for leveling compound application and drying times. Loose planks, particle board and plywood needs to be secure, additional fixings may be required. Do not install during temperature extremes. Whenever possible cover windows & door openings 24 hours prior to install to moderate the interior temperature, reduce excessive heat, and direct UV.

**Please note: our structural warranty covers the professional installation for use over, In-slab Hydronic under-floor heating only.** The heating system must be installed and operated in compliance with the strict guidelines of the manufacturer's recommendations. **In- screed hydronic heating or electric heat blanket systems or similar are not covered by our warranty.**

**Before proceeding with installation** site conditions need to be inspected by the installer prior to commencing. Site specific circumstances such proximity to water, river systems and coastal regions along with other climatic extremes will require more complex installations methods and maintenance. Under floor inspections must be conducted before installation whenever possible. **Ensure installers are wearing appropriate personal protective equipment and that the site is well ventilated and protected from excessive heat, direct sunlight, or moisture ingress. Use temporary window coverings if the site is unoccupied or if no coverings exists.**

**PRE-INSTALLATION REQUIREMENTS**

Importantly, the installation should be performed by a professional contractor. The installation process and method selected is solely the responsibility of the contractor and you must be satisfied that the contractor is qualified to conduct your site installation. Workmanship of installation is not covered by the manufacturer's warranty. Should you have any concerns contact the retailer or building contractor involved in your project. **Please store in original cartons placed on a flat, dry area away from any extreme temperatures or moisture.**

1. **The planks must be carefully inspected prior to install to detect any imperfections, do not install planks that contain defects.** If certain planks are displaying slight bow set aside under load to assist with site acclimatisation, these planks can be reused later.
2. **FAULTY PLANKS SHOULD NOT BE INSTALLED and will not be covered by warranty. A waste factor of 8-10 % is required for length cutting, sorting and visual selection. If product faults are detected, immediately contact the point of purchase.**
3. **The site area must be clean and free of any contaminants, dust, or other construction / painting activity whilst the installation is in progress. Make sure you have the necessary floor covering protection material available if further construction is occurring after the installation. Do not use adhesive tape directly on the surface of the planks.**
4. Our MR laminate click flooring ranges are designed to be installed without glue. The Angle/ Fold 5G click system allows the
5. planks to be joined without adhesive to the sub-floor. In some situations, a cross-linked DIN certified PVA adhesive will make it easier to assemble planks under door thresholds and tight floor spaces, the black plastic tongue may also be removed if adhesive is being used to secure the short - end joint. **Refer diagram, Special Installations.**

[www.preferencefloors.com.au](http://www.preferencefloors.com.au)

**Adelaide (SA)**

t +61 8 8262 2774  
sa@preferencefloors.com.au

**Brisbane (QLD)**

t +61 7 3875 1688  
qld@preferencefloors.com.au

**Melbourne (VIC)**

t +61 3 9794 5111  
vic@preferencefloors.com.au

**Perth (WA)**

t +61 8 9471 7785  
wa@preferencefloors.com.au

**Sydney (NSW)**

t +61 2 9738 1188  
sales@preferencefloors.com.au

**FLOATING INSTALLATION – Acoustic underlay with attached moisture barrier (PE) film or an acoustic underlay with 200uM builders’ plastic (BP) placed on the sub-floor to function as a moisture barrier is required.**

All floating installations require a moisture barrier and acoustic underlay on top of all substrates. Our 2mm Standard and Ultra Green Underlay are 2 in 1 products incorporating a PE moisture barrier film attached to an acoustic sound dampening foam. If the product you use does not include a moisture barrier PE film, you must install 200uM builders’ plastic (BP) under the acoustic foam prior to installation.

**Perimeter and room to room expansion provisions must be followed to ensure warranty guidelines are compliant.**

1. **Concrete slab must be dry, maximum 2.5% and wood-based floors dry, maximum 14 %. Substrate flatness is critical; sub-floor should not exceed 3mm over a 3m radius in all directions.** For concrete slabs, any hollows or humps must be levelled prior to installation. Please follow manufacturer’s guidelines for leveling compound application and drying times. **Do not install flooring if levelling compound is not dry. Do not install the floor if the subfloor has a history of moisture related issues.**
2. **Place acoustic underlay with PE film & or 200uM BP with underlay on sub-floor & up wall skirt area approx. (>50mm), overlap and tape securely to avoid any moisture ingress from the subfloor and perimeter walls.**
3. **First and last plank length should not be less than 300 mm, short end joins on parallel planks should be at least 300 mm in distance from the adjoining plank, Figure 1.** Plan the layout of plank lengths and for visual aspects prior to final fix. This will assist in providing a balanced blend of grade, colour, and joint alignment. For optimum visual impact planks should run in the direction of the longest wall area. It is always a smart idea to make sure the owner’s expectations are consistent with the installer’s layout plan.
4. The floor installation requires **perimeter expansion of 12 – 15mm for all floating installations, this cannot be avoided. Width areas greater than > 6m and length runs greater than >11m** will require expansion and transmission joints to assist with the natural movement of a floating installation. **As a guideline allow an extra 1- 2 mm expansion gap for every extra 1m of width over the standard raft size, (6m x 8m).** Adequate space around heating and service ducts must be created to allow the floor to expand and contract. **Refer Figure 2 & 3. Note: caulking will hinder necessary floor movement, it should not be used except in wet area installs.**
5. If the client objects to trim inclusions, please keep a record that the client did not wish to include expansion trims. Perimeter expansion guidelines must be followed. Wherever possible, each room should be treated as a separate install, this will assist in reducing floor movement and floor tension for an optimum install.
6. **Large objects such as Kitchen Island benches should not be placed on a floating floor.** The floor planks need to be installed around the perimeter of the Island Bench or under the bench kick boards/fascia to allow for natural floor movement.
7. To better blend and balance the natural batch variation the installer should always work from several open cartons of product to create a balanced and natural visual for the installation. Planning the install areas is a critical part of the project.

Figure 1.

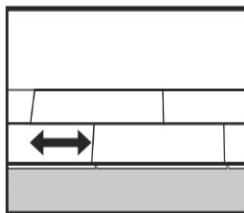


Figure 2.

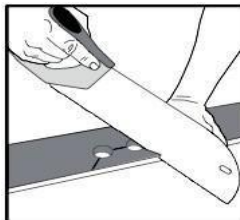
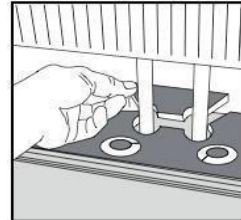
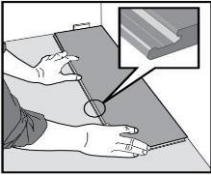


Figure 3.

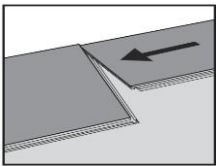


## DIAGRAMS: AQUASTOP MR LAMINATE FLOORING WITH 5G / 2G CLICK PROFILE.

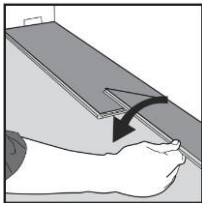
**Sawing / Cutting tip;** Take care when cutting to avoid surface chipping, if you are using a cross-cut hand saw or electric drop saw, the surface of the plank should be face up to avoid chipping. If you are using a handheld electric sawing device such as a jig saw, then it is recommended you place the surface face down to avoid chipping.



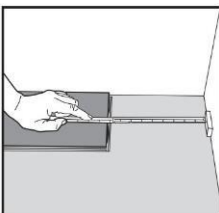
**Fig. 1 First plank, first row.** Place a spacer of **12-15 mm thickness** to the left and position the plank against the wall. Later, after 3 rows, you can easily position the flooring against the front wall with distances **12- 15 mm**.



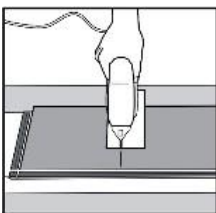
**Fig 2. Second plank, first row** angle long side & fold short end into place gently and tight to the short end of first plank. Light hand pressure or a lengthways tap maybe required to secure tightly. **Please make sure both long edges and short ends are tight with no visible gaps.**



**Fig 3. Fold / Angle the plank down.** During the angle process make sure the planks are tight against each other. Afterwards press down or slightly tap down at the short end or long edge of the installed plank till its flat. No major force is or required, use a tapping block or piece of softwood to avoid edge damage.

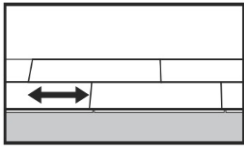


**Fig 4. At the end of the first row, put a spacer 12 - 15 mm at the wall and measure the length of the last plank to fit.**

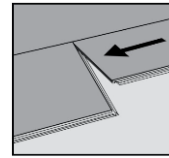


**Fig 5. Cut to length– remember sawing tips,** if cutting using a drop-saw or hand saw, cut it with the visible face up. Then install it as per previous plank. If using a jig saw its face down to avoid chipping.

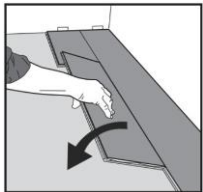
## DIAGRAMS: 5G / 2G CLICK PROFILE CONTINUED.



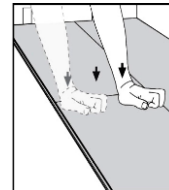
**Fig 7.** General distances between short ends. Minimum distance between short ends of planks in parallel rows **shall not be less than 300-500 mm**. This improves the stability of the floor.



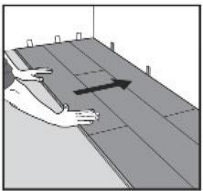
**Fig 8a** Second plank, second row place the panel at an angle into the groove of the previous row make sure that the end of the plank is tight/flush to the short end of the previous plank. Lengthways tap is required to flush and secure short end join.



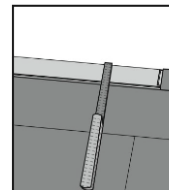
**Fig 8b** Fold or angle the plank down with a slight press slight press to the left to the short end of the previous plank. Again, using the tapping block tap it against the against the long end into the previous row. During the fold /angle fold / angle down, make sure the plank is tight against tight against each other.



**Figs 8c** as it flattens itself to the floor **press or gently tap** the top of the short end of the installed panel until its flat. Finish installing this plank by tapping it with a tapping block on the long side to ensure secure installation.

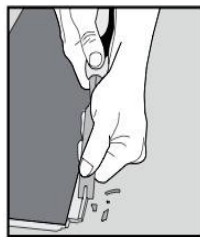


**Fig 9** After 2-3 rows adjust the spacing distance to the front wall by placing spacers spacer's 12- 15 mm. Once the adjustment is done against wall, continue install till the last row.



**Fig 10.** Last row (and perhaps also first row). The minimum width of the last plank should be NOT LESS than 50 mm. Remember distance to wall is 12-15 mm. Tip! Put a spacer before measuring. Cut the planks lengthwise and glue the short ends. See instructions below.

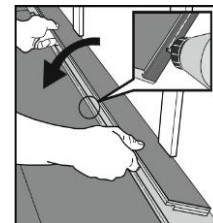
## Special installations - small plank widths. Diagram 1 & 2



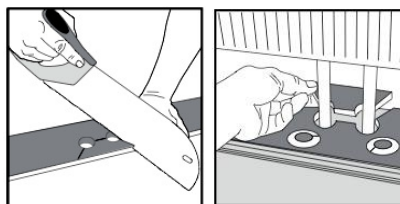
**Diagram 1**

### For tight spaces under door thresholds or wall ends.

Joining at short ends length cut planks. Cut the tongue at the same time you cut the length of the plank and install as shown above. Please note that the smallest width of a plank is 50 mm at the last row. If it is not, the first-row width must be adjusted. This can easily be calculated when measuring the room with before installation. Cut off the locking element with a chisel, push the planks horizontally together. If necessary, place some spacers between the last plank and the wall to keep the planks together during the curing time of the glue. **Black plastic can be removed in these circumstances.**



**Diagram 2**



**Radiator pipes, installation at radiators.** Drill the holes 20 mm larger than the diameter of the pipes. Cut out the panel (with the thinnest blade possible) as per diagram. Install the plank as per normal. Glue the cut-out piece back again.



**Disassembling,** the floor can be disassembled which enables replacement during installation and during use. Separate the whole row by carefully lifting and slightly knocking just above the joint. Fold up or angle and release the whole long side. Disassemble the planks by sliding horizontally where possible or fold up and angle to release.

[www.preferencefloors.com.au](http://www.preferencefloors.com.au)

**Adelaide (SA)**

t +61 8 8262 2774  
sa@preferencefloors.com.au

**Brisbane (QLD)**

t +61 7 3875 1688  
ql@preferencefloors.com.au

**Melbourne (VIC)**

t +61 3 9794 5111  
vic@preferencefloors.com.au

**Perth (WA)**

t +61 8 9471 7785  
wa@preferencefloors.com.au

**Sydney (NSW)**

t +61 2 9738 1188  
sales@preferencefloors.com.au

## AQUASTOP MR LAMINATE FLOOR CARE & MAINTENANCE

- Aquastop MR Laminate is a high-quality, moisture / water-resistant laminate flooring; it will not require any special treatment directly after installation. Whilst Aquastop provides a certain level of extra moisture / water-resistant qualities it remains important that regular care and maintenance responsibilities are required to better preserve your floor. If you follow these general cleaning and required maintenance guidelines your new floor will perform as intended for many years to come. **An expanded MR Laminate floor care guide is available for easy reading or download from our website.**
- **Please cover flooring with adequate protection if construction or painting is still occurring at the site.** Floor protection such as compressed cardboard, thin MDF panels or similar are worthwhile but cannot be left in place for an extended period. **Do not use adhesive tape directly on the surface of the laminate planks, the coating surface may get damaged when removed.** Incidental scratching, chipping and indentations from external sources are site related and therefore will not be covered by our warranty.
- For floating installations requiring skirting-boards or scotia, these items should be installed by fixing them directly to the adjacent wall. **Do not fix the skirting board or scotia trim directly into the laminate,** this will stop the floor from moving freely and create floor tension leading to floor buckling (speed bumps). Undercutting existing skirting or door jambs is a common method to accommodate the necessary perimeter expansion if you intend to keep the original skirting.
- The floor must be protected from intense direct sunlight. Screens, blinds, or window tinting must be used to inhibit direct sun. **Large rugs and mats should not be introduced until the floor has acclimatised in its environment; this will take approx. 8 weeks.**
- Do not place office chairs or castor wheel chairs directly on the surface of the floor, a rigid plastic chair protector or similar must be placed on the surface to stop damage from chair movement and grit build up.
- Place felt or similar floor protection pads under all kitchen or occasional furniture & chairs. This should assist in reducing general wear & tear in higher traffic areas.
- **Do not use a steam mops or wet mopping to clean the floor at any stage after installation.** Static or absorbent towelling mops should be used for all laminate floor surfaces. When incidental spills occur simply wipe dry with an absorbent cloth and use a light bristle broom for daily cleaning. **Do not use generic supermarket floor cleaning solutions on the floor,** we recommend professional floor care products such as **Bona** or **Loba**. **Spray Mop Kits and refill floor cleaning** products are readily available online or through popular retail outlets in Australia & New Zealand.
- **An expanded MR Laminate floor care guide is available for easy reading or download from our website.**

Our MR laminate flooring products are manufactured from natural wood-based materials that will expand and contract in shape if moisture or humidity is elevated, they may also shrink if moisture or humidity becomes extremely low. As a natural product changes from these circumstances may lead to irreversible damage if the interior temperature and humidity is constantly exposed to extremes. Please review the floor care guide to familiarise yourself with the requirements on how best to live and maintain your laminate floor. By following our simple floor care and install guidelines a well-maintained laminate floor can last a lifetime.

**Disclaimer:** Preference Floors has used its reasonable endeavours to ensure the accuracy and reliability of the information contained herein and, to the extent permitted by law, will not be liable for any inaccuracies, omissions, or errors in this information nor for any actions taken in reliance on this information. Products must be installed in accordance with relevant installation recommendations and industry best practices.  
© Homemirus Pty Ltd trading as Preference Floors. Head Office 02 97381188

[www.preferencefloors.com.au](http://www.preferencefloors.com.au)

Adelaide (SA)

t +61 8 8262 2774  
sa@preferencefloors.com.au

Brisbane (QLD)

t +61 7 3875 1688  
qld@preferencefloors.com.au

Melbourne (VIC)

t +61 3 9794 5111  
vic@preferencefloors.com.au

Perth (WA)

t +61 8 9471 7785  
wa@preferencefloors.com.au

Sydney (NSW)

t +61 2 9738 1188  
sales@preferencefloors.com.au